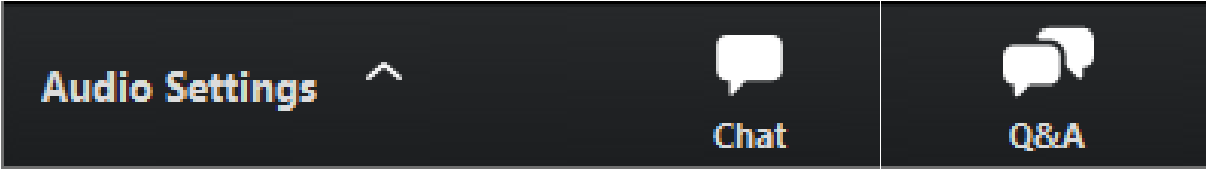


All attendees are muted. To adjust your audio settings during the meeting, click on **Audio Settings**.



Please use the **Q&A window** to ask questions or offer comments.



CHAT is disabled during the presentation. Please communicate with the team through the **Q&A window**.

June 2026 Construction Meeting

Please note that this meeting is being recorded.

Meeting information

Please note that this meeting is being recorded.

Time: Noon to 1 p.m.

Q&A: Please submit your questions via the Q&A chat box at the bottom of your screen.

Contact us: Want to ask us a question after the meeting ends? Send us an email at sr520bridge@wsdot.wa.gov.

Want to share this meeting with others? Next week, visit the Construction Corner at sr520construction.com to view a recording of the meeting and download a copy of today's presentation.

Stay up to date
Get weekly updates about current and upcoming construction activities straight to your inbox.



Portage Bay Bridge and Roanoke Lid Project

June 2026 Construction Meeting

June 18, 2026

Please note that this meeting is being recorded.

Welcome

Facilitator

- Allan Vann, Skanska Public Information Officer

Presenters

- Raeanna Pittman, Skanska Engineer

Meeting information

- Presentation on construction activities
- Q&A at the end of the meeting



Workers using a vacuum truck to prepare the site for lid foundation construction north of SR 520 (June 2026)

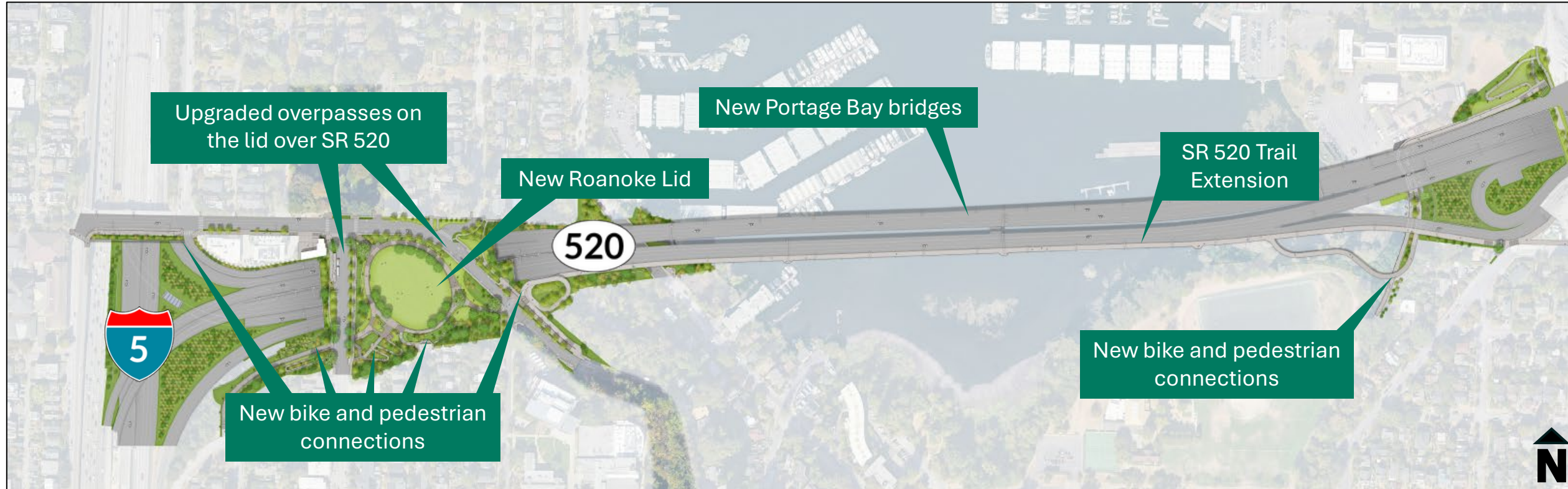
Agenda

- Project benefits and schedule
- Project milestones
- Ongoing construction
 - Drilled shaft installation
 - Bridge and lid piers
 - Acoustifence installation
 - Tree removal
 - On-land piledriving
- Upcoming traffic impacts
- How to stay informed
- Q&A session



The new temporary off-ramp and existing bridge looking east (June 2026)

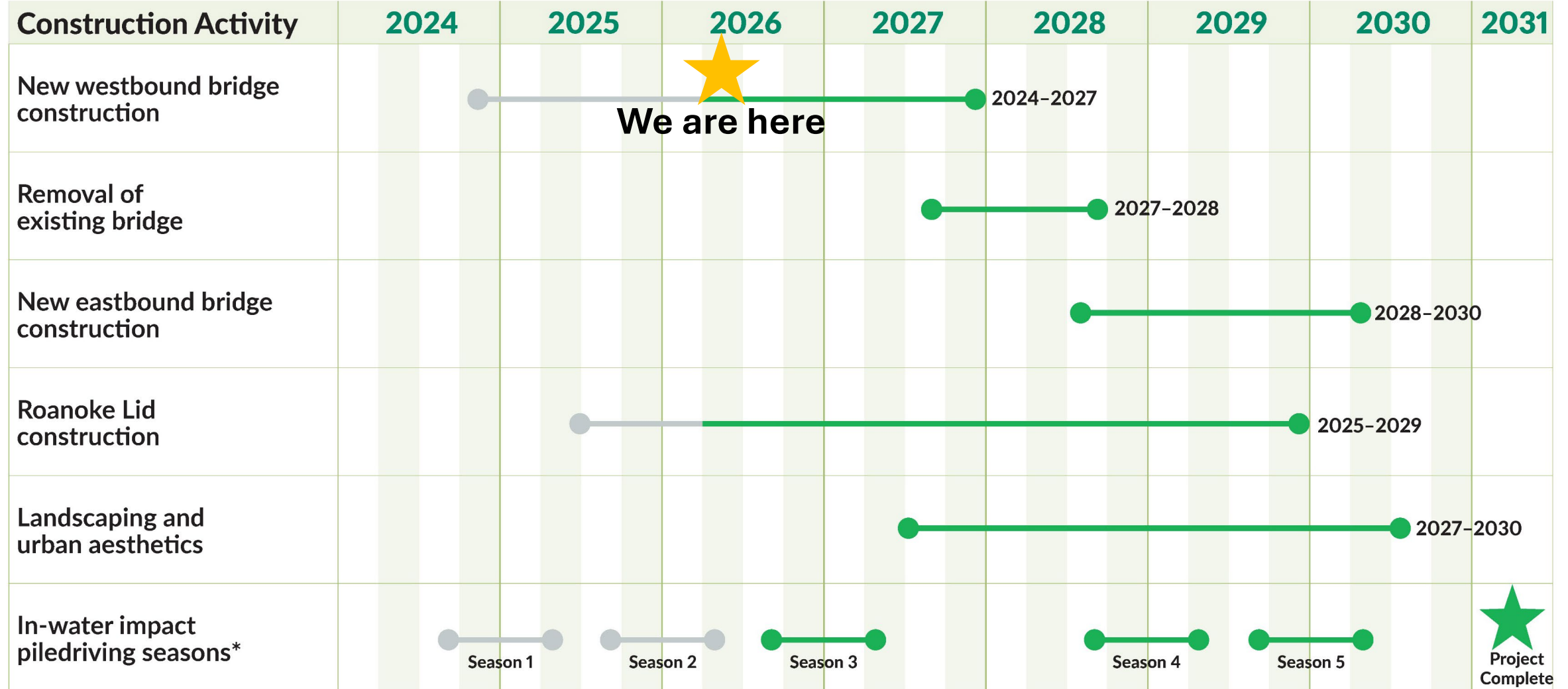
Project benefits



Map of major project elements.

Project schedule

Schedule subject to change



*In-water impact piling will occur in seasons annually from September through April. Impact piling on land and piling with a vibratory hammer will occur year-round.

Project milestones

Traffic shifts on eastbound SR 520 complete

- In May, we completed two traffic shifts on eastbound SR 520.
- Thank you for continuing to #MeetThenMerge near the I-5 interchange and adjusting to the new, earlier eastbound off-ramp to Montlake Boulevard.
- These shifts mark an important step towards helping us finish the project.



*Looking west toward the new eastbound SR 520 off-ramp to Montlake Boulevard
(June 2026)*

Permanent bridge foundations (drilled shafts) update

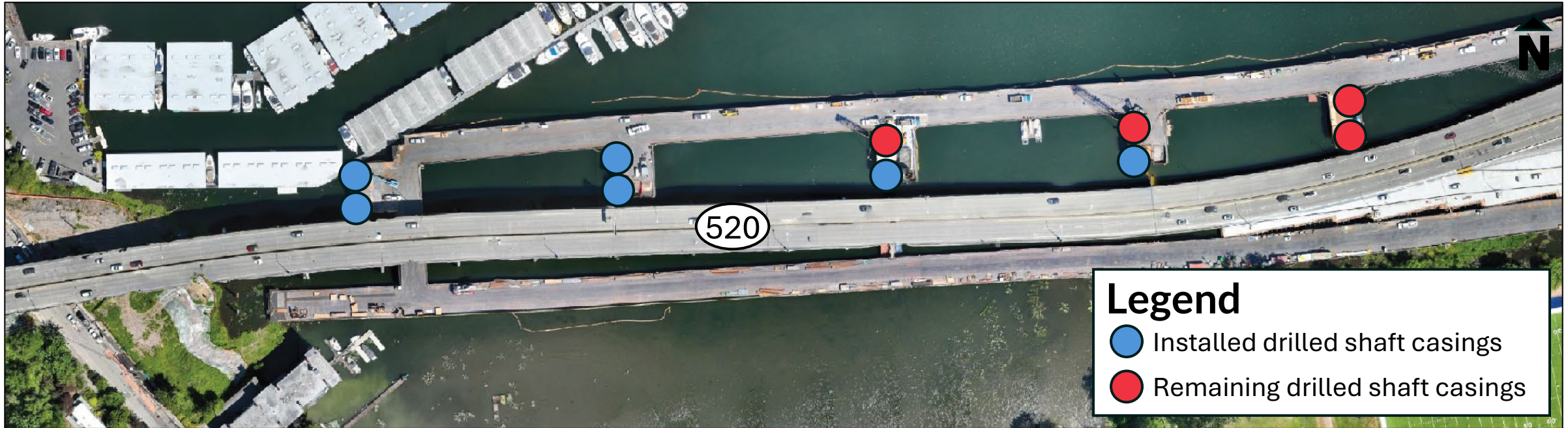
Drilled shaft casing installation

- Crews are continuing to use a large vibratory hammer to install casings in Portage Bay.
- Most vibratory hammer work happens in 10–15 minute stretches, although some periods may last longer.
- Nearby neighbors will hear and feel this work in Portage Bay during daytime hours through at least early July.
- As a reminder, this kind of noise and vibration will be a regular part of construction activity in the project area over the next 4–5 years.
- Crews will use vibratory hammers from:
 - 7 a.m. to as late as 10 p.m. weekdays
 - 9 a.m. to as late as 10 p.m. on weekends



The vibratory hammer used to install sections of casing (May 2026)

Drilled shaft installation map



Map of current and upcoming drilled shaft installation areas (for piers 4 through 8).

Preparing the casings for rebar and concrete

- After installation, crews remove soil from inside each casing to prepare for permanent rebar and concrete.
- Soil is removed using a crane-mounted drilling bucket and loaded into trucks.
- Material is hauled to a staging area near the Montlake lid to dry before transport off site.
- Crews pump water out of each casing for treatment.
 - Water is treated in Baker tanks near the Montlake Playfield and Roanoke Park.



Crews installing casings (June 2026)

Installing rebar for drilled shafts

- Starting late June, we will use barges to bring in large rebar cages from the Lakepointe staging site in Kenmore.
 - Each rebar cage is between 99 feet and 130 feet long.
- Crews will place the rebar cages inside each of the installed casings.
- After we place the rebar cages, we will pour concrete to fill the shaft.
- When the concrete is cured, we will begin to build the next bridge elements, called columns and caps, on top of the drilled shaft.
- What to expect:
 - Barge deliveries from Kenmore to Portage Bay on Mondays and Wednesdays
 - Crews will work during day and nighttime hours



Crews using cranes to install casing sections (June 2026)

Bridge and lid foundation 'piers'

Westbound Portage Bay bridge foundation pier map

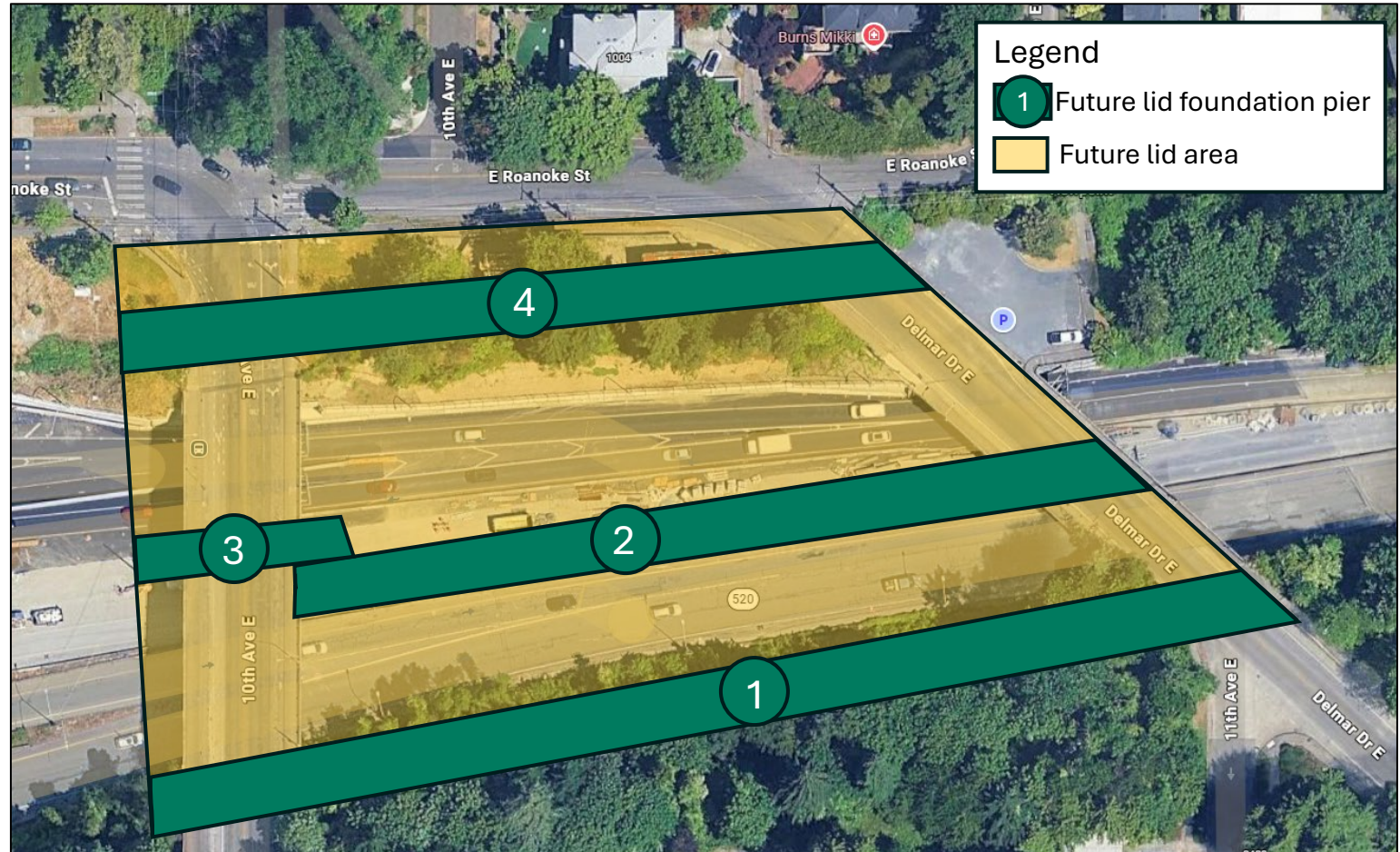
- The drilled shafts we're installing in Portage Bay will form foundation 'piers' for the new bridge.
- We plan to install foundations along piers 4 through 8 this summer.
- Crews will build twelve bridge piers over the course of the project.



A map of the Portage Bay bridge pier locations.

Roanoke lid foundation pier map

- Crews are also continuing to install foundation piers for the Roanoke lid.
- Lid pier 2 was installed earlier this year.
- Construction has started on lid pier 4.
- Work on lid pier 1 will begin later this summer.



A map of the Roanoke lid pier locations.

Building the lid foundation: Upcoming activities

- Crews will build the new foundation sections and the new wall the same way they built the first foundation section.
- Crews will remove trees, regrade the work zone, drill shafts into the ground, then fill the shafts with concrete and rebar.
- Depending on soil conditions, crews may need to install steel beams and plates for safety.
- The steel beams (piles) and plates are temporary and will be removed later.



Drilling equipment crews will use to construct the lid foundation (March 2025)

Building the lid foundation: Construction sequence

Through the summer, crews will:

1. Prepare the work zone by digging and regrading the area where we will install drilled shafts.

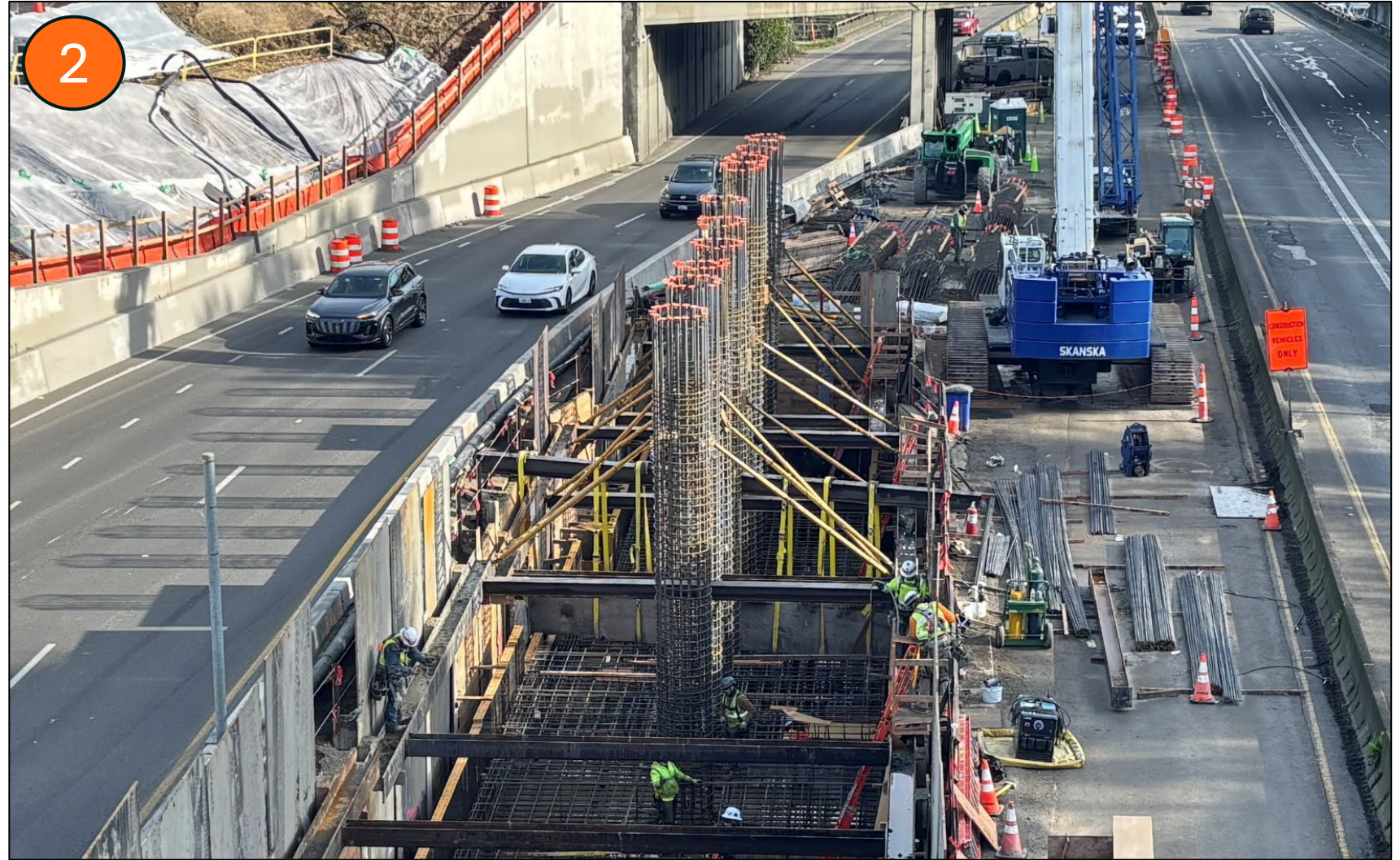


Crews excavating for the lid foundation between the eastbound and westbound lanes of SR 520 (Dec. 2025)

Building the lid foundation: Construction sequence

Through the summer, crews will:

1. Prepare the work zone by digging and regrading the area where we will install drilled shafts.
2. Drill shafts into the soil and set rebar in the shafts.



Crews setting rebar in drilled shafts (Feb. 2026)

Building the lid foundation: Construction sequence

Through the summer, crews will:

1. Prepare the work zone by digging and regrading the area where we will install drilled shafts.
2. Drill shafts into the soil and set rebar in the shafts.
3. Place pillar forms and pour concrete into the forms.



Crews placing pillar forms for poured concrete (March 2026)

Building the lid foundation: Construction sequence

Through the summer, crews will:

1. Prepare the work zone by digging and regrading the area where we will install drilled shafts.
2. Drill shafts into the soil and set rebar in the shafts.
3. Place pillar forms and pour concrete into the forms.
4. Remove the pillar forms.



The foundation section with removed pillar forms, plates and beams (April 2026)

Building the lid foundation: Upcoming impacts

- Through the summer, neighbors can expect:
 - Noise from trucks, excavation equipment and drilling
 - Vibration from casing installation, as well as steel plate and beam installation and removal
 - Daytime and nighttime work

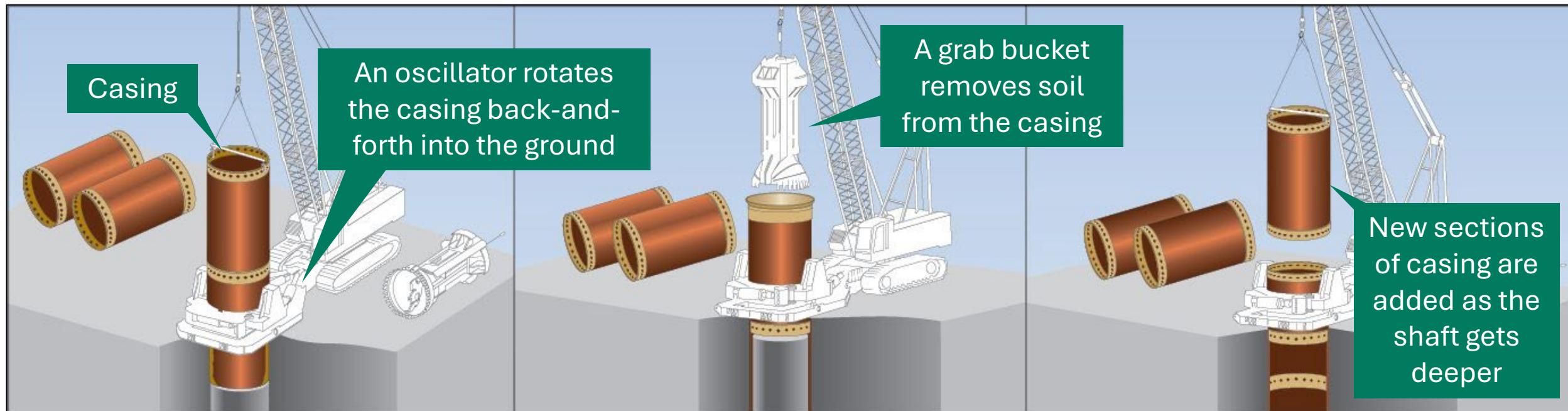
Note: Lid construction will be ongoing through 2029



Crews excavating for the lid foundation between the east and westbound lanes of SR 520 (Jan. 2026)

More about drilled shafts for the future Roanoke lid

Instead of using a vibratory hammer to install the casings – like we’re doing in Portage Bay – crews will use an oscillator to “rotate” the steel casing into the ground. Soil is removed from inside the casings with a grab bucket.



An example of an oscillator that our subcontractor may use to install the lid casings. (Photo via Malcolm Drilling)

Mitigating impacts during lid construction

- To mitigate impacts from construction, crews will:
 - Use only broadband ‘white noise’ backup alarms
 - Build 8- to 12-foot-tall acoustifences in places around the project area

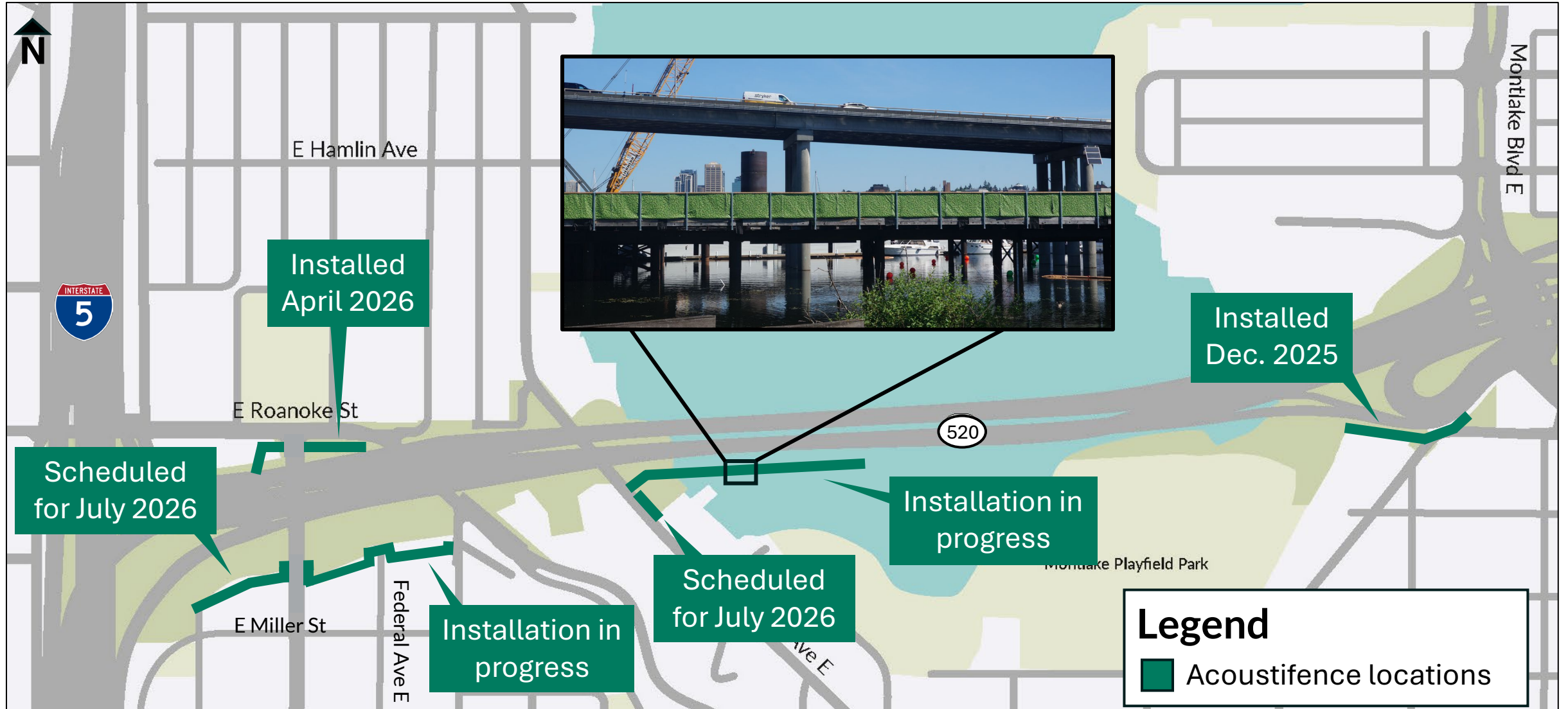


Acoustifence installed along E Roanoke St. (May 2026)

Ongoing construction

Installing acoustifences

Schedule subject to change



Map of acoustifence locations in the project area. This fencing can be an effective way to reduce noise and provide visual buffering.

Select tree and vegetation removal

- The map to the right shows the remaining areas where crews will remove select trees and vegetation.
- We will continue to install acoustifences in select areas after the trees are removed.



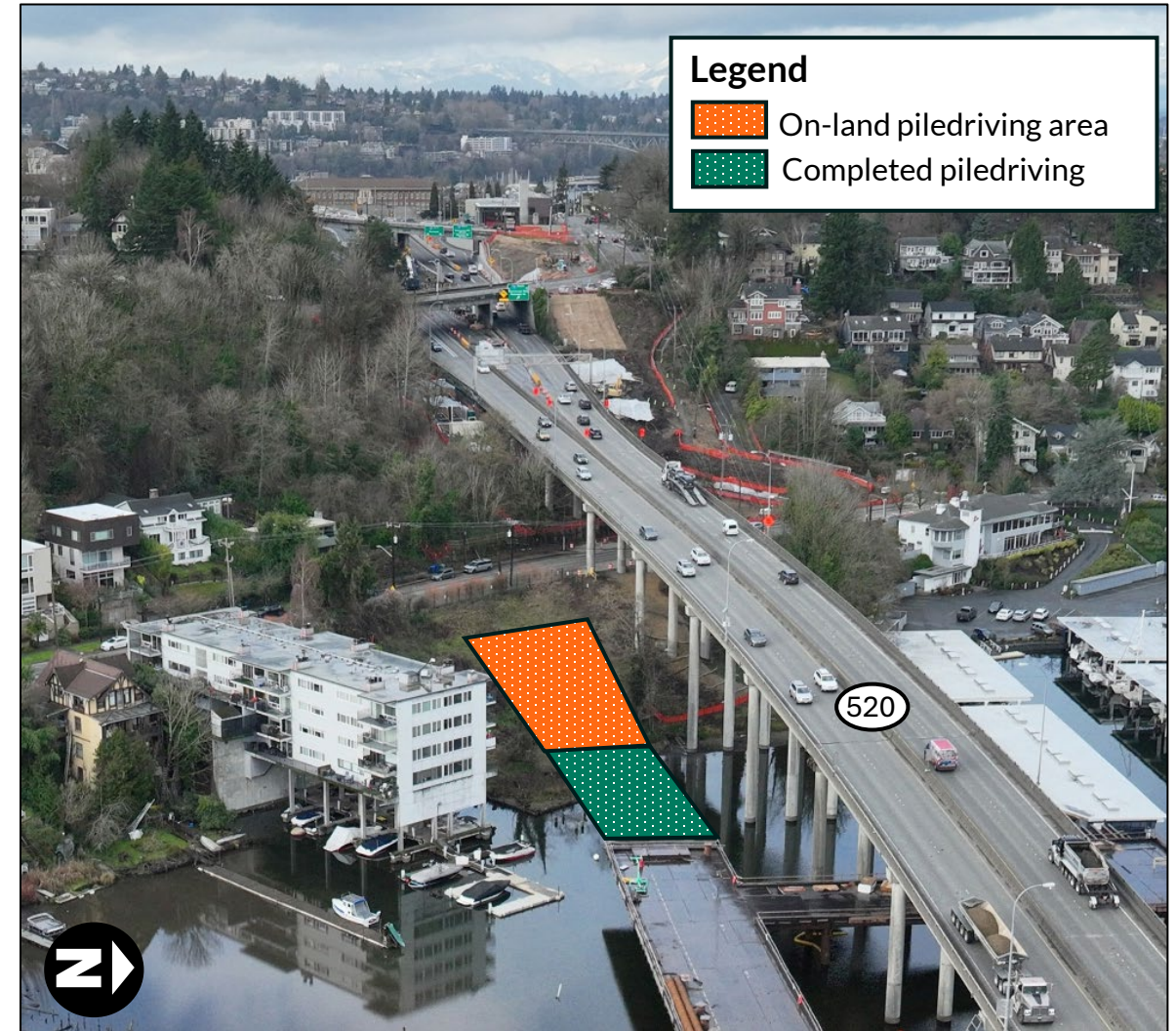
Map of areas where select trees have been or will be removed.

On land piledriving continuing now

- Now through the end of June, crews are impact piledriving near the Montlake lid to install shoring to prevent soil movement.
- As early as July, crews will resume using an impact hammer to install piles near Boyer Avenue East (pictured right).
- We will use these piles to create a temporary haul road connection to and from Boyer Avenue East.

*Upcoming piledriving this summer

While crews have finished their in-water impact piledriving until September 1, they will return to the area to install piles on land using both vibratory and impact hammers. We're still determining the schedule for this work and will keep neighbors up to date in our weekly listserv email updates.



Graphic showing the piledriving areas between the work trestle and Boyer Avenue East.

Upcoming traffic impacts

Upcoming planned closures

Dates subject to change

- **June 22 – 23:** Eastbound SR 520 off-ramp to Montlake Boulevard closed overnight from 10 p.m. Monday to 6 a.m. Tuesday
- **June 29 – July 1:** Westbound SR 520 off-ramp to East Roanoke Street closed nightly from 10 p.m. to 6 a.m.
- **July 17 – July 20:** Montlake Boulevard closed from East Hamlin Street to East Louisa Street from 10 p.m. Friday to 6 a.m. Monday (sign bridge replacement)

Visit Construction Corner @ [sr520construction.com](https://www.wsdot.wa.gov/sr520construction) for the most up-to-date closure information.

How to stay informed



PORTAGE BAY CONSTRUCTION HOTLINE

24-hour phone line for Portage Bay Project construction questions.

206-319-4520



CONSTRUCTION CORNER WEBSITE

One-stop shop for construction information during the Portage Bay Bridge and Roanoke Lid project.

sr520construction.com

Questions?

Email the project team at
sr520bridge@wsdot.wa.gov



EMAIL UPDATES

Receive regular email updates about upcoming construction with our weekly newsletter. Subscribe here:

<https://bit.ly/m/sr520portagebay>

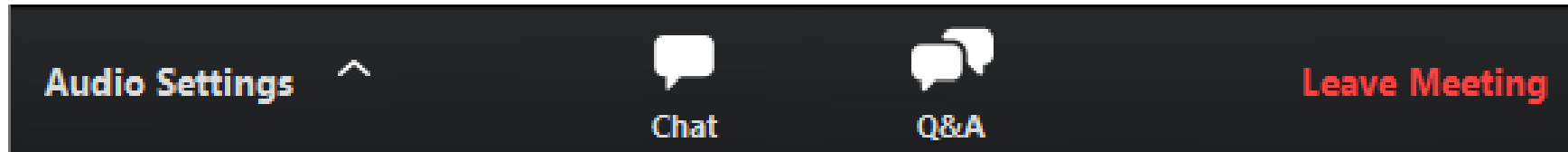


MEETINGS

Attend our open houses and monthly construction meetings. Sign up for email updates to receive invitations to the meetings.

Comments and questions

Please use the **Q&A window** to ask questions or offer comments.



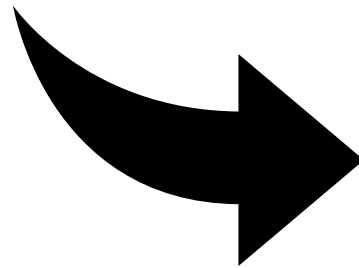
CHAT is disabled during the presentation.
Please communicate with the team through the **Q&A window**.



Meeting recordings

Want to review this meeting again?
Visit the SR 520 Construction
Corner to find meeting materials
and recordings.

**Remember to scroll down to the
bottom of the page!**



Washington State
Department of Transportation

SR 520 Program News Good To Go!

STATE ROUTE 520

Construction Map Program Construction Projects Contact Us Outreach & Events

Portage Bay Bridge and Roanoke Lid Project

The Portage Bay Bridge and Roanoke Lid Project will replace the aging Portage Bay Bridge with a seismically resilient structure that includes improved bus/carpool travel and an extension of the SR 520 Trail. This project also builds a landscaped lid between Seattle's Roanoke Park and North Capitol Hill neighborhoods.

Portage Bay Project Webpage

Other

We strive to keep the public informed about our project construction activities and effects. We do this through regular public meetings, neighborhood FAQs, community events, and digital communications.

Public meetings

[View the Portage Bay Project's latest monthly construction meeting recording.](#)

[View the Portage Bay Project's latest monthly construction meeting presentation.](#)