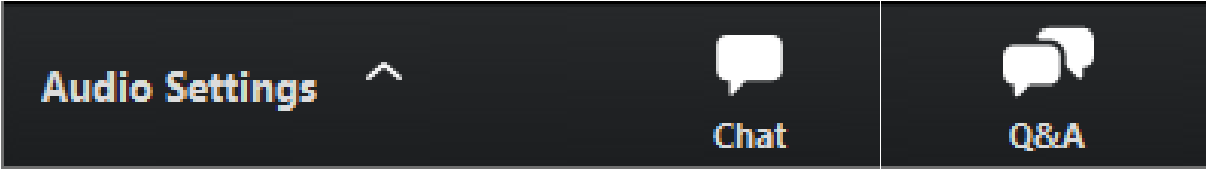


All attendees are muted. To adjust your audio settings during the meeting, click on **Audio Settings**.



Please use the **Q&A window** to ask questions or offer comments.



**CHAT** is disabled during the presentation. Please communicate with the team through the **Q&A window**.

## May 2026 Construction Meeting

*Please note that this meeting is being recorded.*

### Meeting information

*Please note that this meeting is being recorded.*

**Time:** Noon to 1 p.m.

**Q&A:** Please submit your questions via the Q&A chat box at the bottom of your screen.

**Contact us:** Want to ask us a question after the meeting ends? Send us an email at [sr520bridge@wsdot.wa.gov](mailto:sr520bridge@wsdot.wa.gov).

**Want to share this meeting with others?** Next week, visit the Construction Corner at [sr520construction.com](http://sr520construction.com) to view a recording of the meeting and download a copy of today's presentation.

**Stay up to date**  
Get weekly updates about current and upcoming construction activities straight to your inbox.



# Portage Bay Bridge and Roanoke Lid Project

## May 2026 Construction Meeting

May 28, 2026

*Please note that this meeting is being recorded.*

# Welcome

## Facilitator

- Allan Vann, Skanska Public Information Officer

## Presenters

- Raeanna Pittman, Skanska Engineer

## Meeting information

- Presentation on construction activities
- Q&A at the end of the meeting



A worker builds framing for the new temporary SR 520 off-ramp (May 2026)

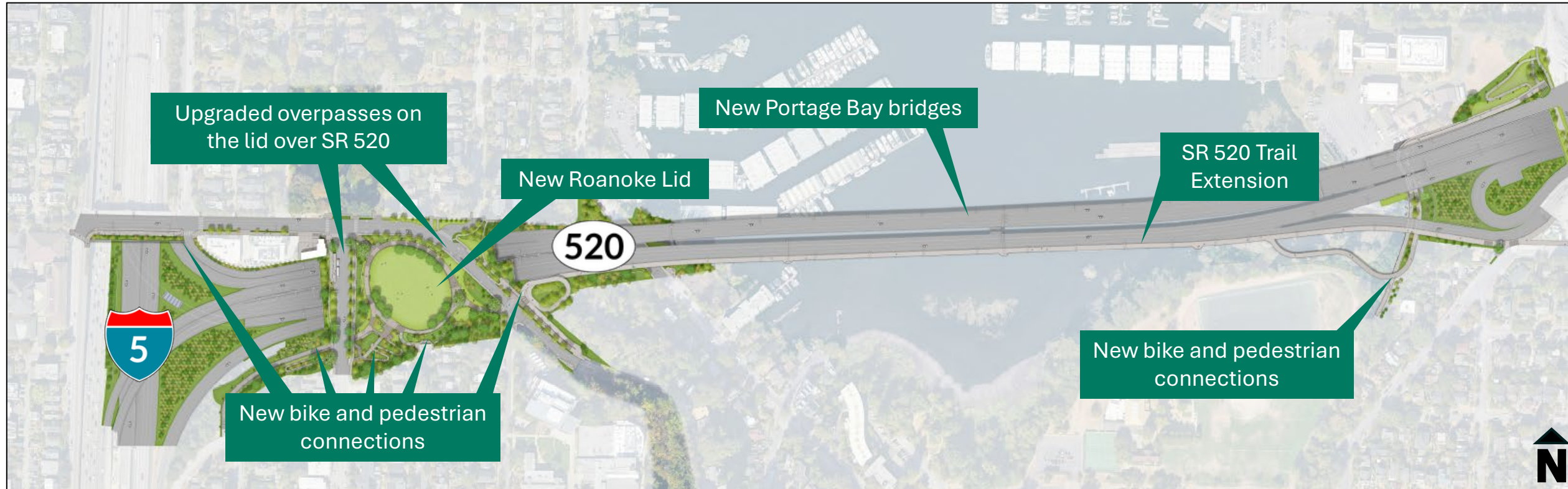
# Agenda

- Project benefits and schedule
- Piledriving update
- Ongoing construction
  - Drilled shaft installation
  - Acoustifence installation
  - Boyer Avenue utility work
  - Tree removal
- Upcoming construction
  - Roanoke Lid work
  - Piledriving
  - Upcoming traffic shifts
  - Traffic impacts
- How to stay informed
- Q&A session



Crews install drilled shaft casings north of the Portage Bay Bridge (May 2026)

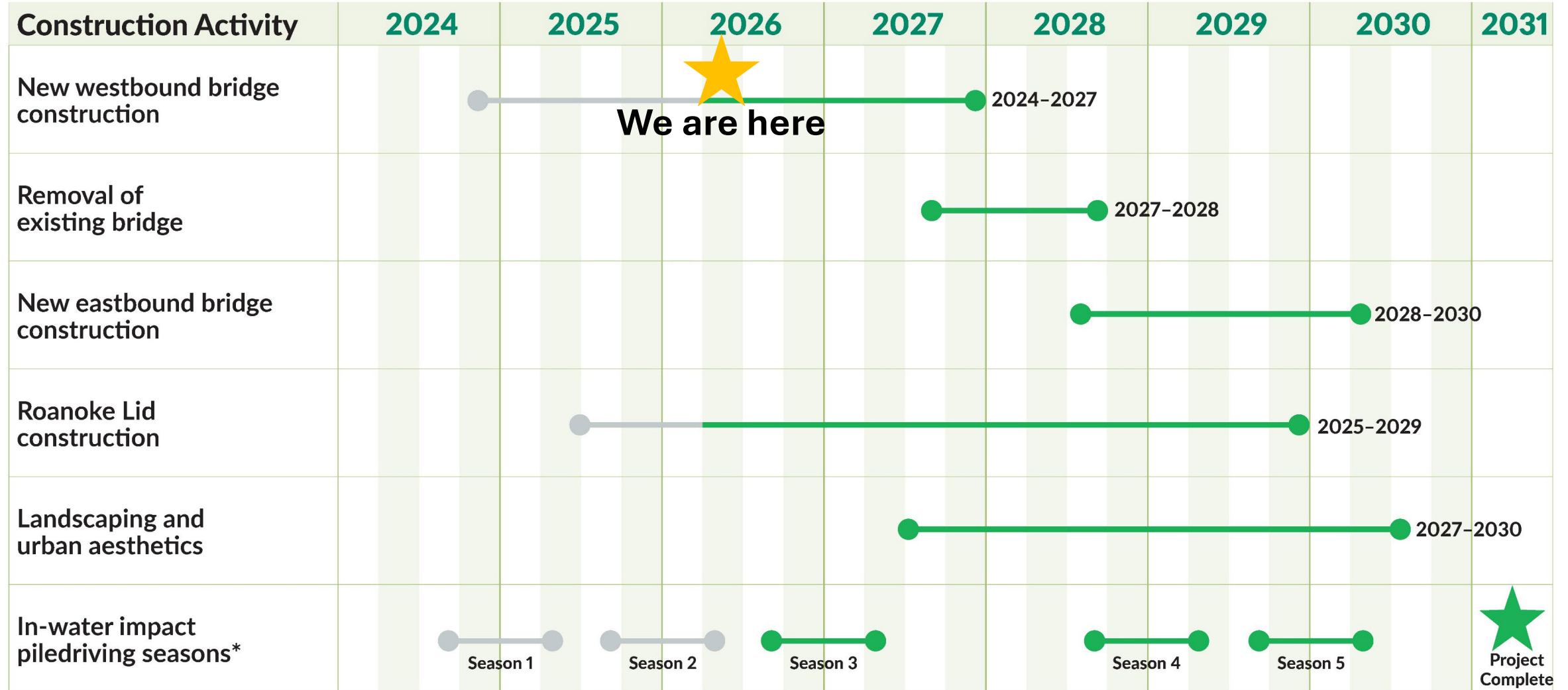
# Project benefits



Map of major project elements.

# Project schedule

Schedule subject to change



\*In-water impact piledriving will occur in seasons annually from September through April. Impact piledriving on land and piledriving with a vibratory hammer will occur year-round.

# Bridge and lid foundation 'piers'

# Westbound Portage Bay bridge foundation pier map

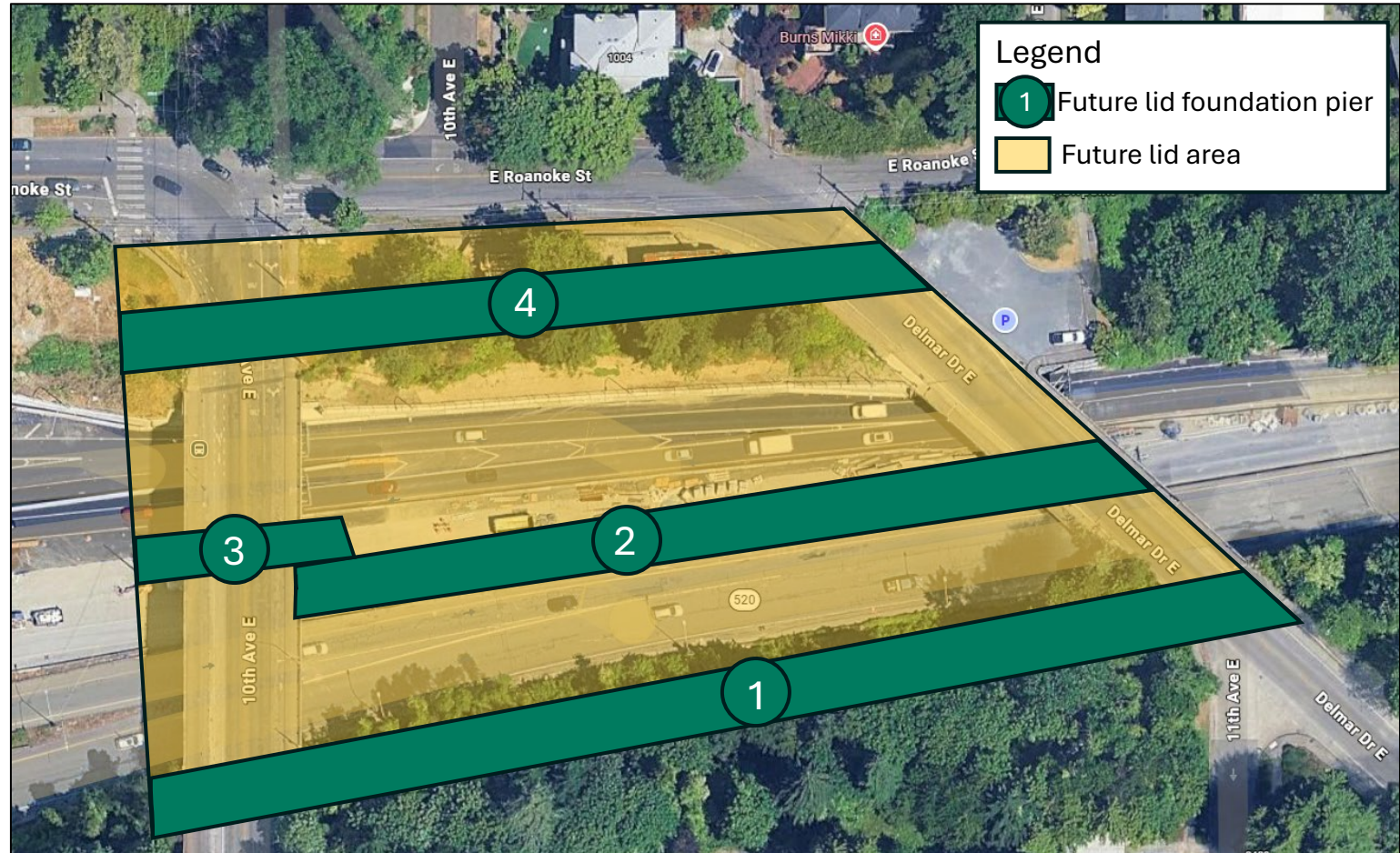
- The drilled shafts we're installing in Portage Bay will form foundation 'piers' for the new bridge.
- We plan to install piers 4 through 8 this summer.
- Crews will build twelve bridge piers over the course of the project.



A map of the Portage Bay bridge pier locations.

# Roanoke lid foundation pier map

- Crews are also continuing to install foundation piers for the Roanoke lid.
- Lid pier 2 was installed earlier this year.
- Construction on lid pier 1 and lid pier 4 will begin this summer.



A map of the Roanoke lid pier locations.

# Permanent bridge foundations (drilled shafts) update

# Drilled shaft casing installation

- We will continue delivering casing sections to the trestle through mid-summer.
- So far, crews have delivered 18 out of the 40 casings.
- Once on site, crews weld the casing sections together.
- After welding, crews use vibratory hammers to install the casings in Portage Bay.
- The casings form shafts that extend as deep as 200 feet below the lakebed.



A section of casing prepared for vibratory hammer installation (May 2026)

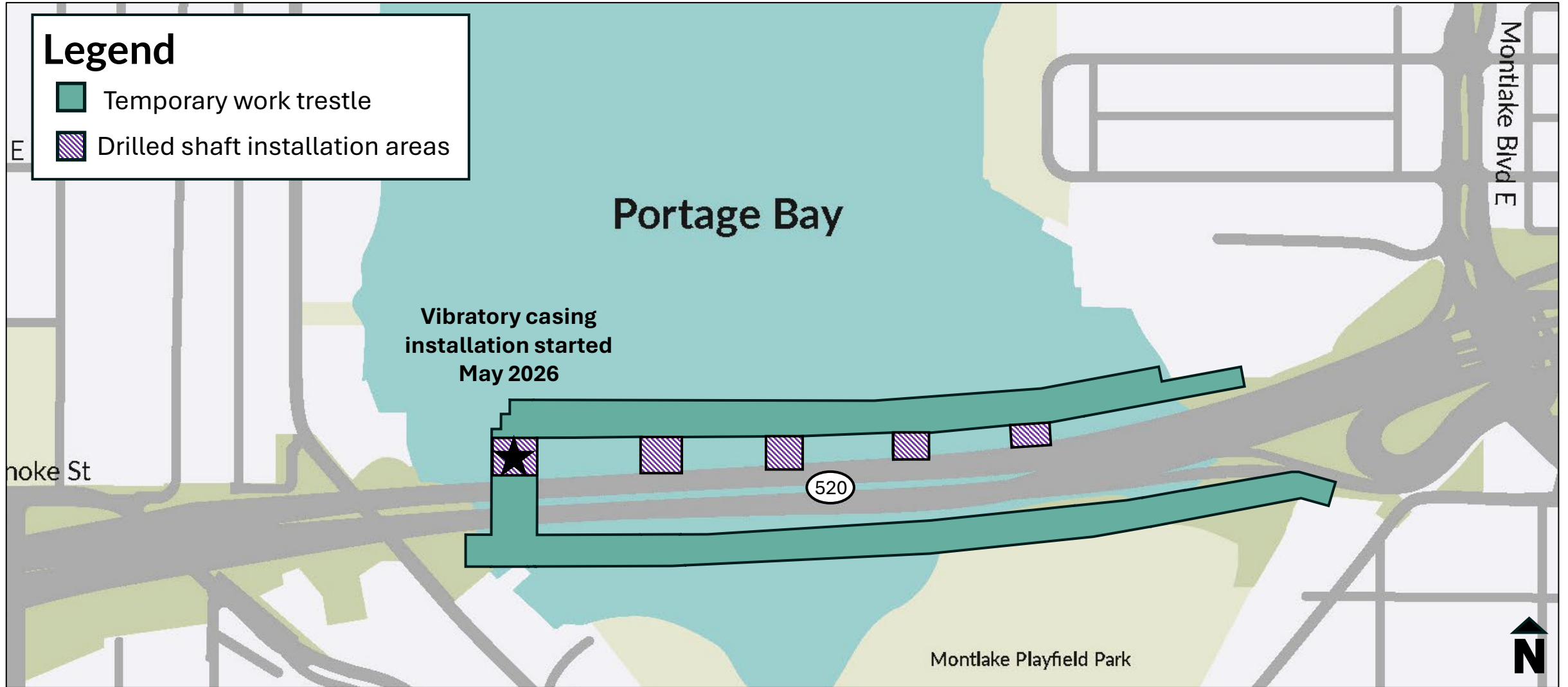
# Drilled shaft casing installation

- Crews are using a large vibratory hammer to install casing sections.
- Most vibratory hammer work will happen in 10–15 minute stretches, although some periods may last longer.
- Nearby neighbors will likely hear and feel this work during daytime hours through mid-summer.
- This kind of noise and vibration will become a regular part of construction activity in the project area over the next 4–5 years.
- Crews will use vibratory hammers from:
  - 7 a.m. to 10 p.m. weekdays (excluding holidays)
  - 9 a.m. to 10 p.m. on limited weekends



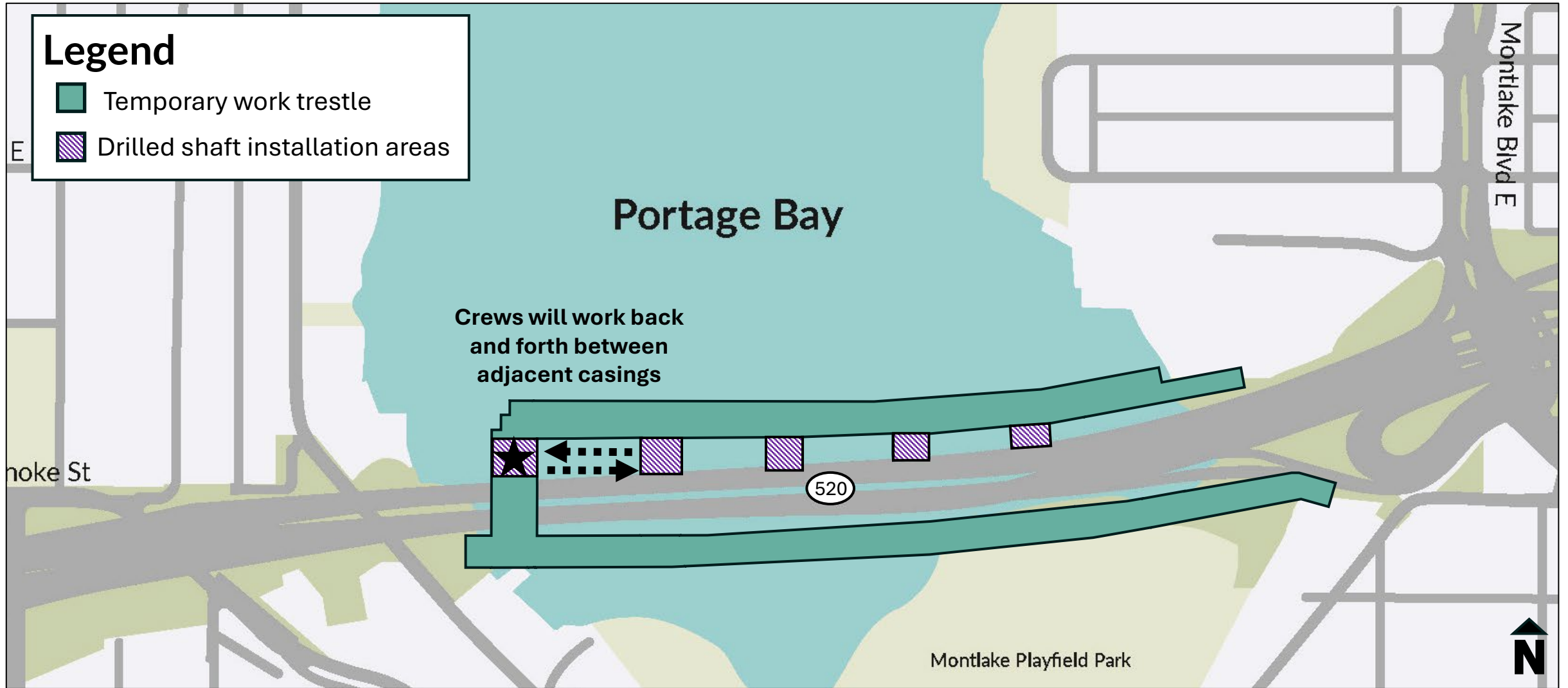
The vibratory hammer used to install sections of casing (May 2026)

# Drilled shaft installation map



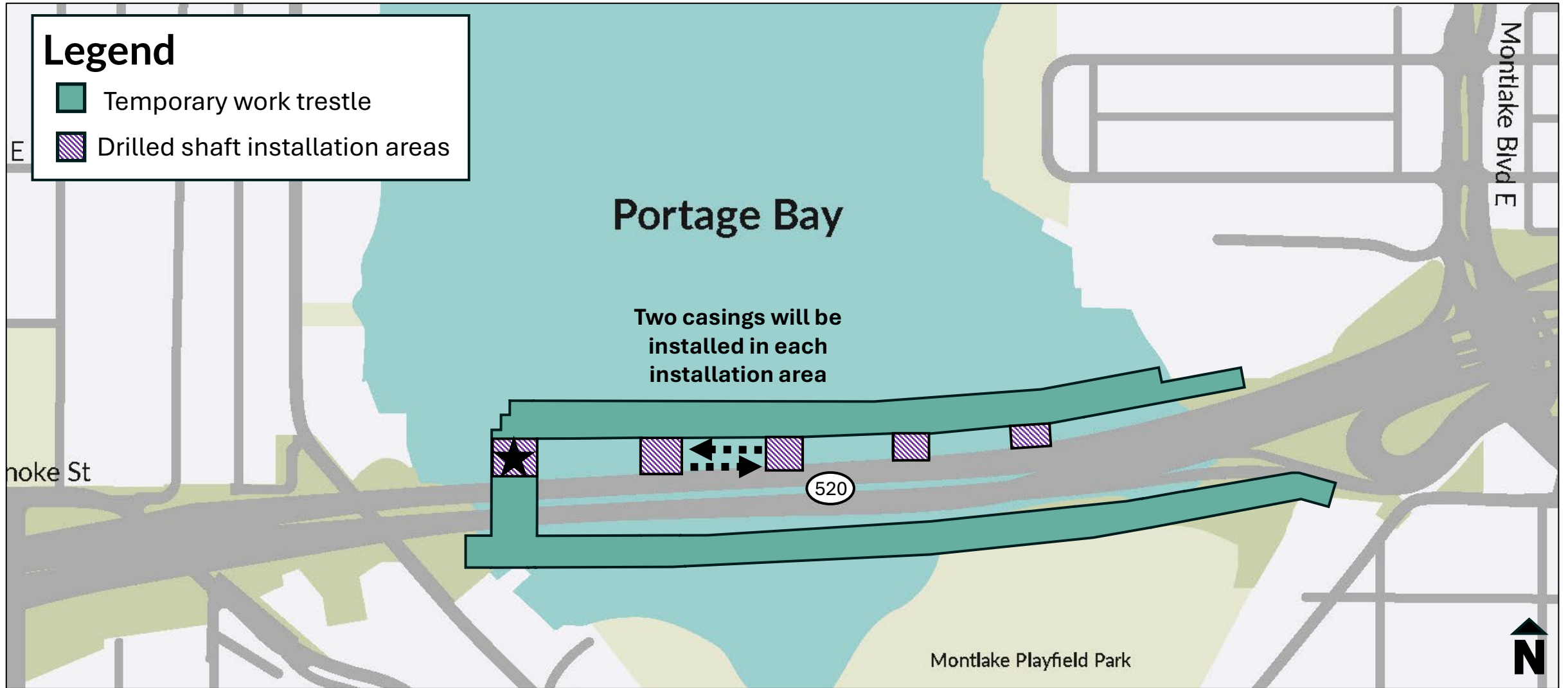
Map of current and upcoming drilled shaft installation areas.

# Drilled shaft installation map



Map of current upcoming drilled shaft installation areas.

# Drilled shaft installation map

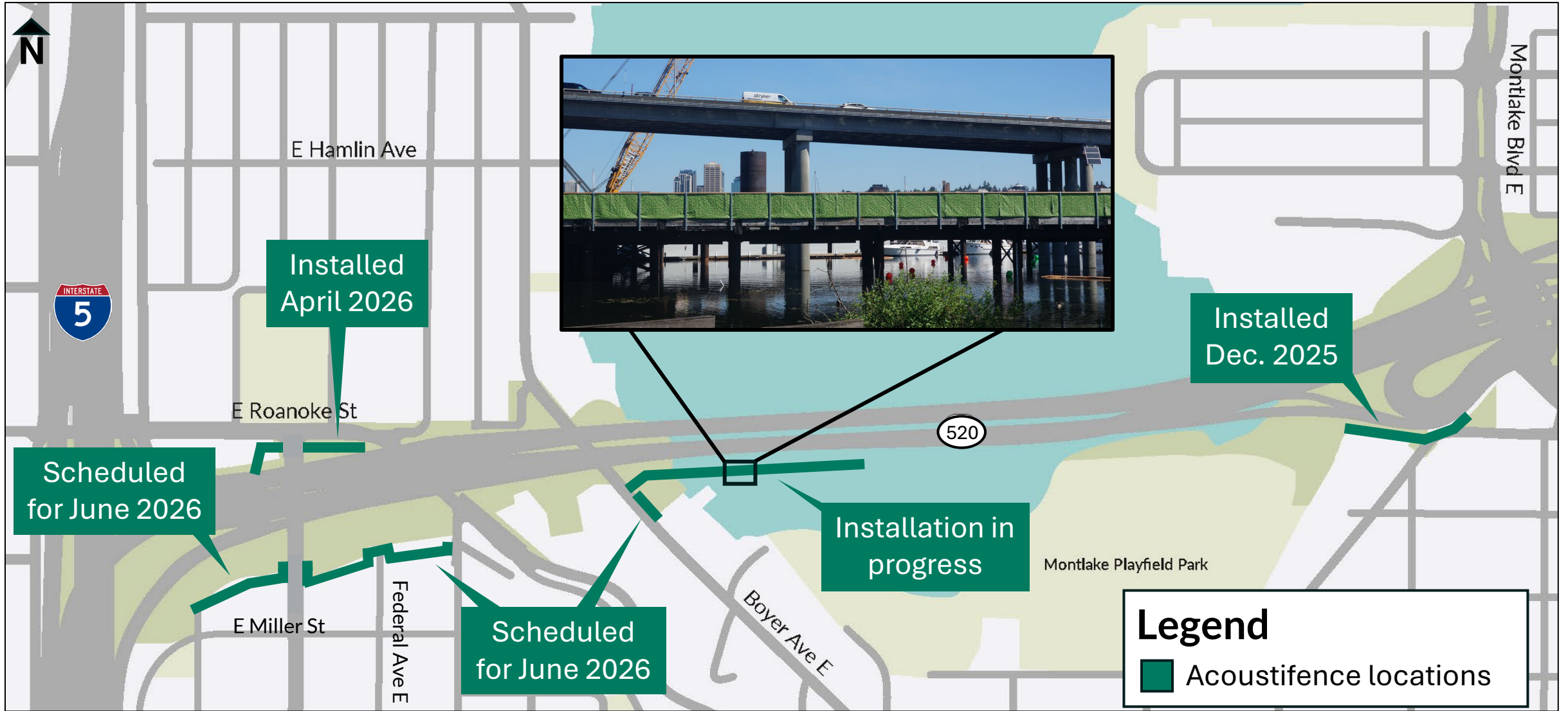


Map of current and upcoming drilled shaft installation areas.

# Ongoing construction

# Installing acoustifences

Schedule subject to change



Map of acoustifence locations in the project area. This fencing can be an effective way to reduce noise and provide visual buffering.

# New dates: Utility work along Boyer Avenue East

- Now through June, crews will continue utility work along Boyer Avenue East.
- Expect weekday and Saturday lane and sidewalk closures from 9:30 a.m. to 3:30 p.m., or as late as 7:30 p.m. on select days.
- Lane closures are scheduled to go to 7:30 p.m. on Thursday, 5/28, and Friday, 5/29.
- Expect 24/7 parking restrictions in and around the work zone on Boyer Avenue East.



Map of areas where crews are conducting utility work near Boyer.

# Select tree and vegetation removal

- The map to the right shows the remaining areas where crews will remove select trees and vegetation.
- We will continue to install acoustifences in select areas after the trees are removed.



Map of areas where select trees have been or will be removed.

# Upcoming construction

# Building Roanoke lid foundations

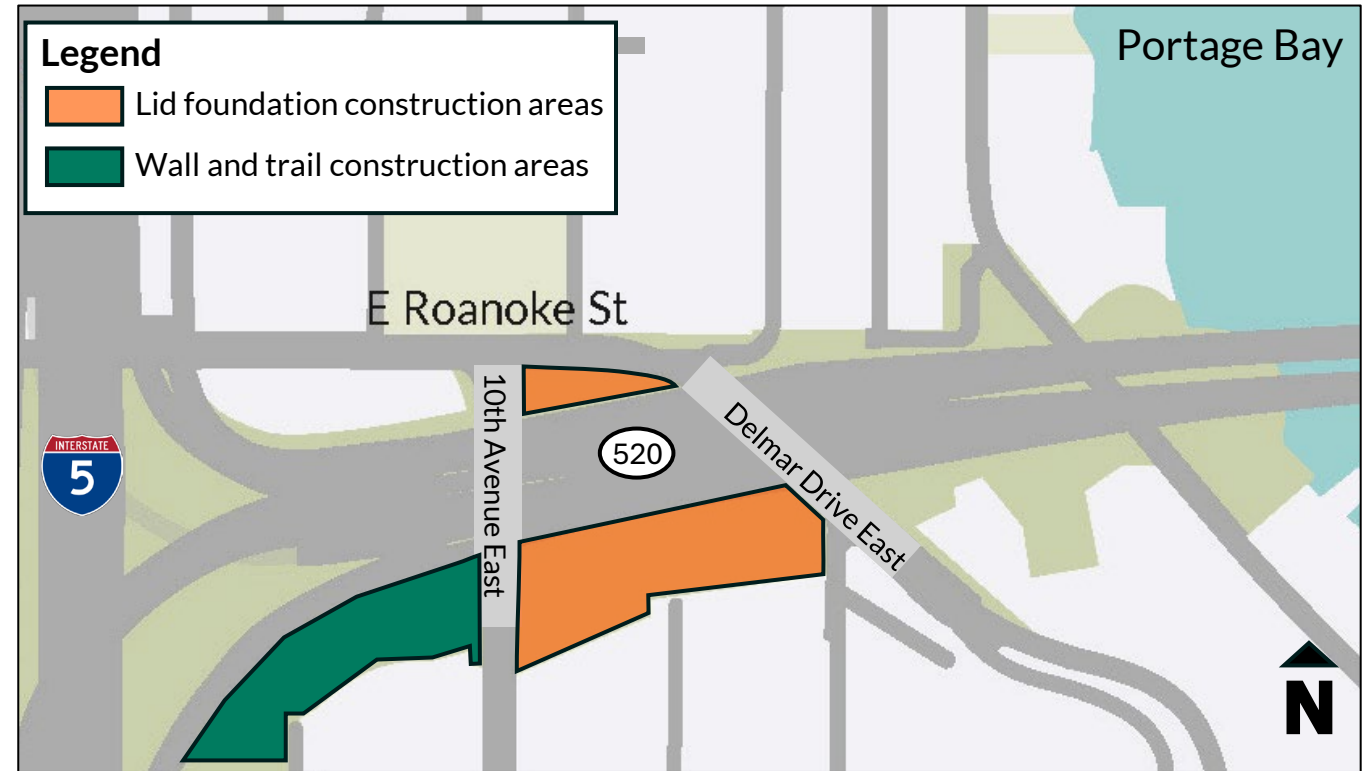
- Crews recently completed the first of several sections of foundation for the new Roanoke lid.
- This kicked off the first stage of long-term, major construction for the new lid.
- The future Roanoke lid will be constructed on top of these foundation sections.



*The completed section of foundation sits between 10th Avenue East and Delmar Drive East, between the eastbound and westbound lanes of SR 520 (May 2026)*

# Building the lid foundation: Future work areas

- Through the summer, crews will build additional sections of lid foundation between 10th Avenue East and Delmar Drive East, just north and south of SR 520.
- Later this year, we will build a retaining wall west of 10th Avenue East to support the new Harvard Connection.



Map of lid construction areas.

# Building the lid foundation: Upcoming activities

- Crews will build the new foundation sections and the new wall the same way they built the first foundation section.
- Crews will remove trees, regrade the work zone, dig trenches, drill shafts into the ground, then fill the shafts with concrete and rebar.
- Depending on soil conditions, crews may need to install steel beams and plates for safety.
- The steel beams (piles) and plates are temporary and will be removed later.



*An example of the drilling equipment crews will use to construct the lid foundation (March 2025)*

# Building the lid foundation: Construction sequence

Through the summer, crews will:

1. Dig trenches and stabilize them with steel plates and beams (piles).

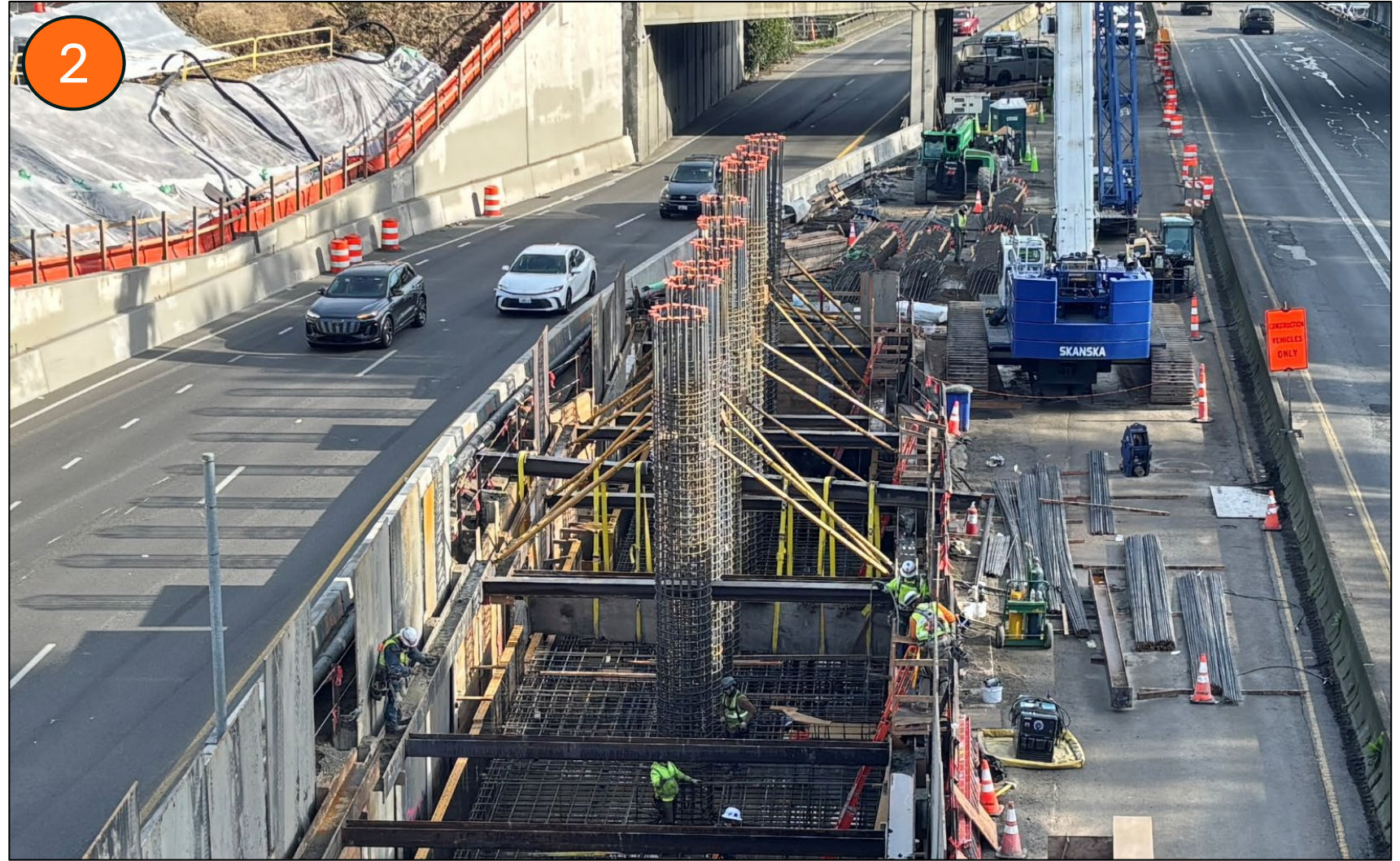


*Crews excavating for the lid foundation between the eastbound and westbound lanes of SR 520 (Dec. 2025)*

# Building the lid foundation: Construction sequence

Through the summer, crews will:

1. Dig trenches and stabilize them with steel plates and beams (piles).
2. Drill shafts into the soil and set rebar in the shafts.



Crews setting rebar in drilled shafts (Feb. 2026)

# Building the lid foundation: Construction sequence

Through the summer, crews will:

1. Dig trenches and stabilize them with steel plates and beams (piles).
2. Drill shafts into the soil and set rebar in the shafts.
3. Place pillar forms and pour concrete into the forms.



*Crews placing pillar forms for poured concrete (March 2026)*

# Building the lid foundation: Construction sequence

Through the summer, crews will:

1. Dig trenches and stabilize them with steel plates and beams (piles).
2. Drill shafts into the soil and set rebar in the shafts.
3. Place pillar forms and pour concrete into the forms.
4. Remove the pillar forms and remove steel plates and beams.



*The foundation section with removed pillar forms, plates and beams (April 2026)*

# Building the lid foundation: Upcoming impacts

- Through the summer, neighbors can expect:
  - Noise from trucks, excavation equipment and drilling
  - Vibration from casing installation, as well as steel plate and beam installation and removal
  - Daytime and nighttime work

*Note: Lid construction will be ongoing through 2029*



*Crews excavating for the lid foundation between the east and westbound lanes of SR 520 (Jan. 2026)*

# Mitigating impacts during lid construction

- To mitigate impacts from construction, crews will:
  - Use only broadband ‘white noise’ backup alarms
  - Build 8- to 12-foot-tall acoustifences in places around the project area



*Acoustifence installed along E Roanoke St. (May 2026)*

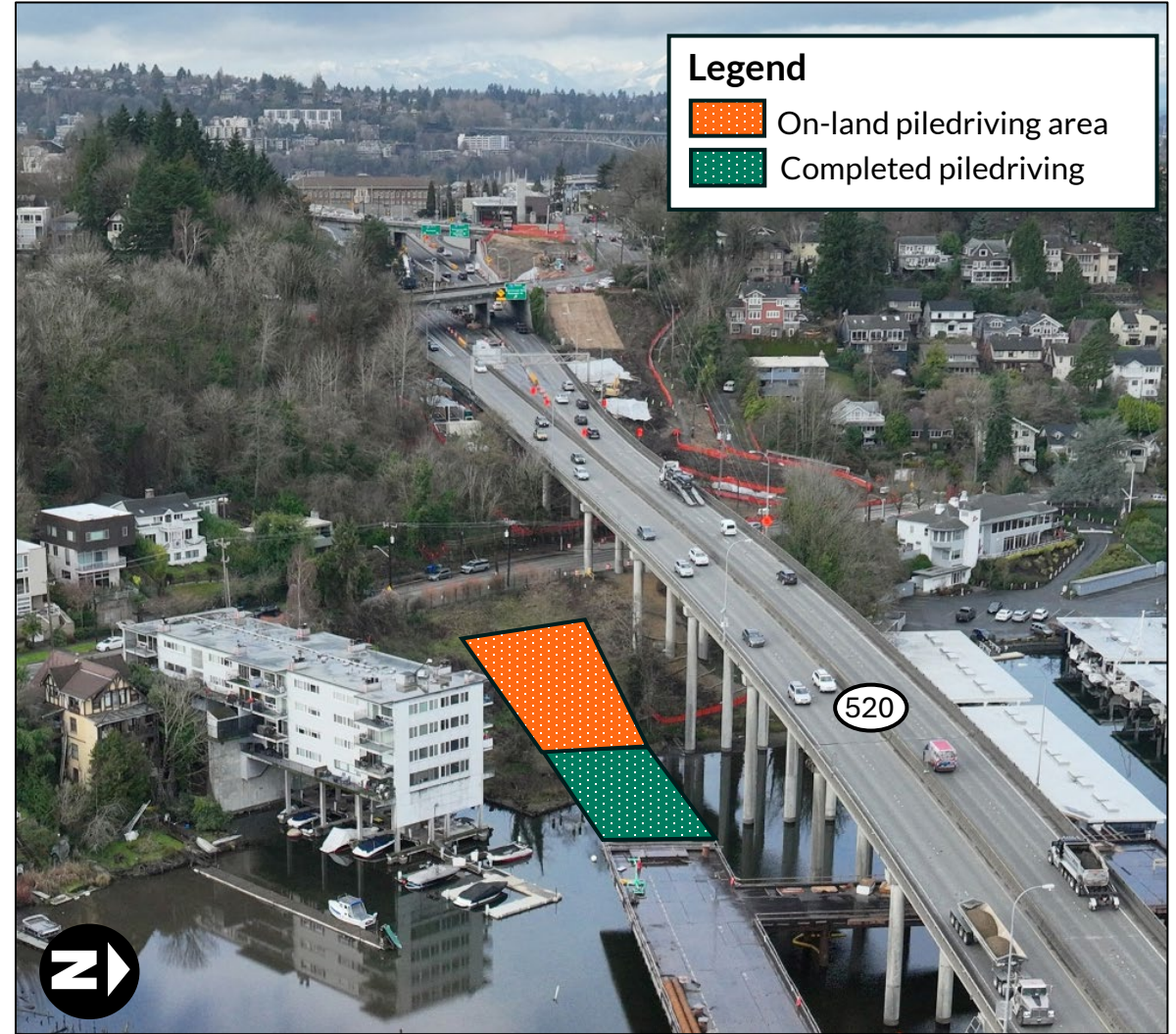
# Piledriving update

# Piledriving update

- Crews will install 10 piles on land later this summer.\*
- We will use these piles to create a temporary haul road connection to and from Boyer Avenue East.



## \*Upcoming piledriving this summer

While crews have finished their in-water impact piledriving until September 1, they will return to the area to install piles on land using both vibratory and impact hammers. We're still determining the schedule for this work and will keep neighbors up to date in our weekly listserv email updates.



Graphic showing the piledriving areas between the work trestle and Boyer Avenue East.

# Impact vs. vibratory piledriving

	Impact piledriving	Vibratory piledriving
<b>Description</b>	<ul style="list-style-type: none"> <li>• A hammer hits the top of the pile</li> <li>• Sharp sound into the air, water, and soil</li> </ul>	<ul style="list-style-type: none"> <li>• The pile is vibrated into the sediment rather than hammered</li> <li>• Continuous sound</li> </ul>
<b>In-water schedule</b>	<b>Sept. 1 through April 30</b>  Season 2 is complete	<b>Year-round</b>
<b>On-land schedule</b>	<b>Year-round</b>  Scheduled to resume this summer	<b>Year-round</b>

## Questions about noise and vibration?

If you have any questions about noise or vibration during construction, please call our 24/7 hotline. We can investigate your concerns in real-time upon receiving your call.  
 24/7 hotline number: 206-319-4520

# Upcoming traffic impacts

# Early May traffic shift reminder

- On May 11, crews shifted traffic onto a new northbound I-5 to eastbound SR 520 off-ramp.
- Travelers can expect to use this new ramp for at least the next two years.

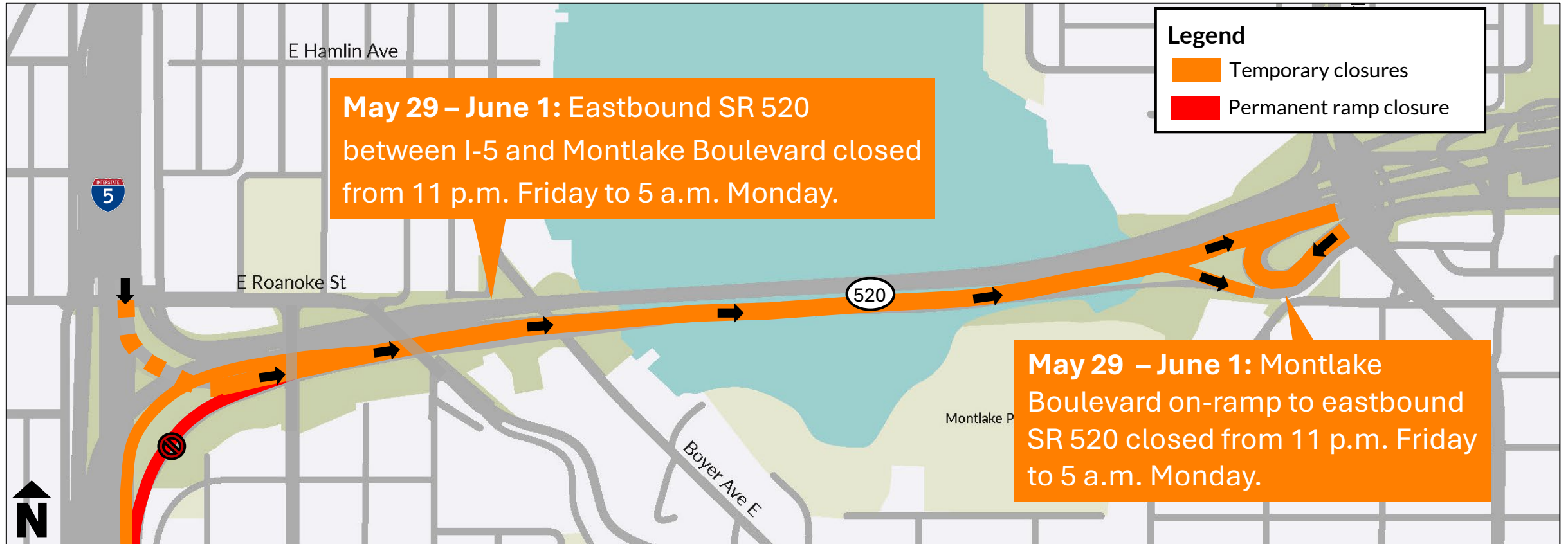


*A view, looking east, of the new northbound I-5 to eastbound SR 520 on-ramp (May 2026)*

# Next shift prep: EB SR 520 in Seattle closed 5/29-6/1

From 11 p.m. Friday, May 29, to 5 a.m. Monday, June 1, crews will:

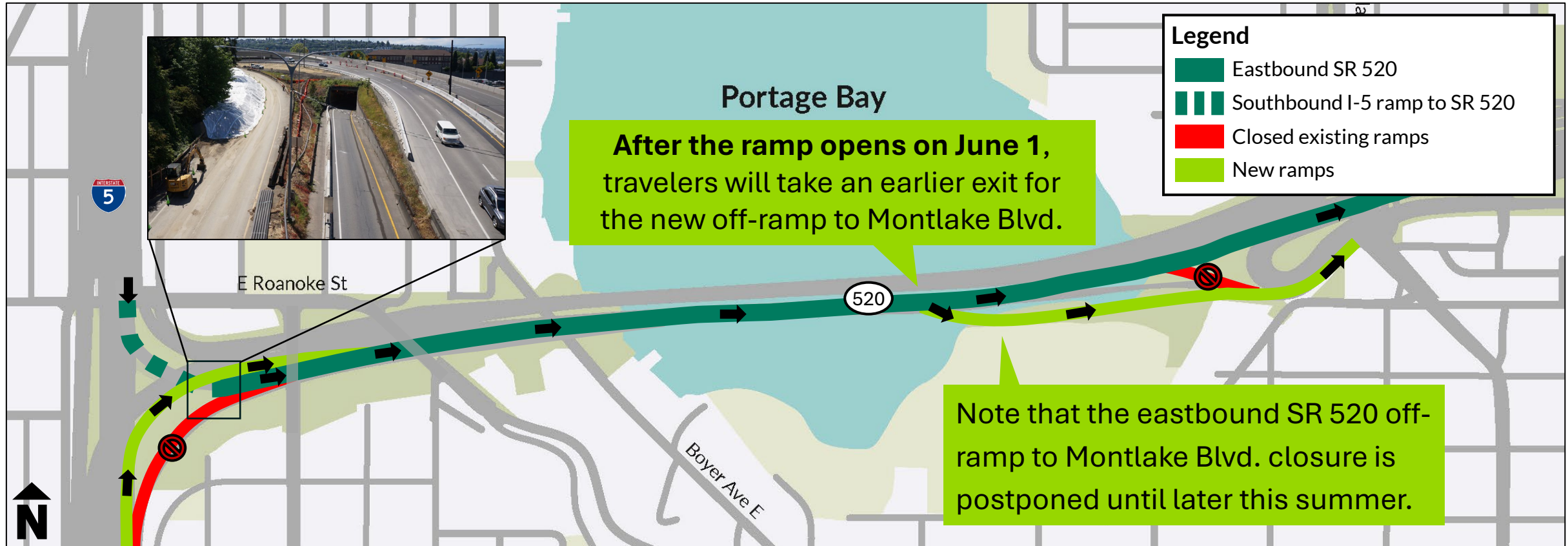
- Close eastbound SR 520 between I-5 and Montlake in Seattle, including the eastbound SR 520 off-ramp to Montlake Boulevard



Map showing upcoming traffic shifts along SR 520.

# Next shift: EB SR 520 off-ramp to Montlake opens

- The new eastbound SR 520 off-ramp will open at 5 a.m. Monday, June 1.
- Eastbound SR 520 travelers taking the exit to Montlake Boulevard should be prepared to exit earlier than usual and pay attention to additional signs.



Map showing upcoming traffic shifts along SR 520.

# Upcoming planned closures

## *Dates subject to change*

- **May 29 – June 1:** Eastbound SR 520 between I-5 and Montlake Boulevard closed from 11 p.m. Friday to 5 a.m. Monday.
- **May 29 – June 1:** Montlake Boulevard on-ramp to eastbound SR 520 closed from 11 p.m. Friday to 5 a.m. Monday.
- **June 15 – 18:** Delmar Drive East closed nightly from 10 p.m. to 6 a.m.
- **July 18 - 19:** Eastbound SR 520 closed overnight from 7 p.m. Saturday to 11 a.m. Sunday.

Visit Construction Corner @ [sr520construction.com](http://sr520construction.com) for the most up-to-date closure information.

# How to stay informed



## PORTAGE BAY CONSTRUCTION HOTLINE

24-hour phone line for Portage Bay Project construction questions.

**206-319-4520**



## CONSTRUCTION CORNER WEBSITE

One-stop shop for construction information during the Portage Bay Bridge and Roanoke Lid project.

**sr520construction.com**

Questions?

Email the project team at  
**sr520bridge@wsdot.wa.gov**



## EMAIL UPDATES

Receive regular email updates about upcoming construction with our weekly newsletter. Subscribe here:

**<https://bit.ly/m/sr520portagebay>**

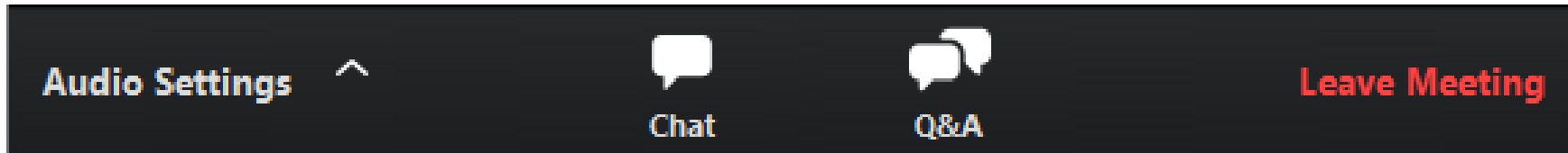


## MEETINGS

Attend our open houses and monthly construction meetings. Sign up for email updates to receive invitations to the meetings.

# Comments and questions

Please use the **Q&A window** to ask questions or offer comments.



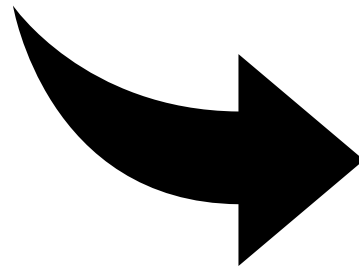
**CHAT** is disabled during the presentation.  
Please communicate with the team through the **Q&A window**.



# Meeting recordings

Want to review this meeting again?  
Visit the SR 520 Construction  
Corner to find meeting materials  
and recordings.

**Remember to scroll down to the  
bottom of the page!**



Washington State  
Department of Transportation

SR 520 Program News Good To Go!

STATE ROUTE 520

Construction Map Program Construction Projects Contact Us Outreach & Events

## Portage Bay Bridge and Roanoke Lid Project

The Portage Bay Bridge and Roanoke Lid Project will replace the aging Portage Bay Bridge with a seismically resilient structure that includes improved bus/carpool travel and an extension of the SR 520 Trail. This project also builds a landscaped lid between Seattle's Roanoke Park and North Capitol Hill neighborhoods.

[Portage Bay Project Webpage](#)

### Other

We strive to keep the public informed about our project construction activities and effects. We do this through regular public meetings, neighborhood FAQs, community events, and digital communications.

**Public meetings**

[View the Portage Bay Project's latest monthly construction meeting recording.](#)

[View the Portage Bay Project's latest monthly construction meeting presentation.](#)